

AudioRealism



Bass Line

Users Guide



Bass Line

Features	3
Introduction	3
Installation	4
Conventions and definitions	4
Architecture	4
Layout	5
Control Section	6
Midi Led	6
Sync	6
Mode	6
Option	6
Pattern	7
Pattern selector	8
Tempo	8
Synthesizer Section	9
Pattern programming Section	10
Programming patterns	11
Time Mode	11
Slides	11
Accents	11
Ties	11
Midi CC	12
Midi Learn	12
Automation of Controls	12
Configuration	13
Using Pattern Mode	14
Pattern Sequencing	14
Pattern Sequencing without retrigger	14
Using Note Mode	15
Importing Rebirth 338 Patterns	16
Freebee/Text pattern format	16
Programs/Banks	16
Copying Patterns between Instances	16
Thanks	17
Appendix: Specifications	18

Features

- Bass Line Emulation
- High pass filter
- Full Midi CC control with learning function
- 18dB (classic) or 24dB selectable filter
- Analog tuning mode
- Internal sequencer
- Rebirth RB-338 Pattern Import
- Freebee/Lush pattern import/export
- Three Midi modes
- VST Host sync
- Integrated distortion unit

Introduction

Thank you for using AudioRealism Bass Line! The Bass Line is a monophonic programmable synthesizer plug-in which can memorize and playback bass patterns in sync with a host sequencer. The voice of the original Bass Line is well known and has become standard studio equipment. The AudioRealism Bass Line is a digital recreation of that instrument, offering every characteristic of the analog instruments while maintaining all the benefits of digital algorithms. More benefits of moving into the digital realm are for example unlimited (that the CPU can support) number of instances and control automation allowing previously unheard effects with the well known voice.

AudioRealism Bass Line should be easy to use if you are familiar with other virtual instruments or the original Bass Line.

Installation

1. Locate the executable **Install.exe** and run.
2. The installer will suggest a path to install the plug-in into.
3. If the path is correct, click <Install> else browse to the path where you keep your VST plug-ins and then click <Install>.
4. The plug-in installation should be complete.

Some hosts need to rescan the plug-ins directory to make the new plug-ins visible from the host. Consult your host documentation. In case of problems, please contact support@audiorealism.se.

Conventions and definitions

1. AudioRealism Bass Line is often referred to as *ABL* in this document.
2. A *Midi note/event* is an entity that is sent from the host to the plug-in.
3. A *note* is an entity that the plug-in plays. It contains information about pitch, slide, accent and time (rest ♯ or 16th ♯).
4. A *pattern* consists of a number of steps (1-64). Each step has a designated note.
5. A *program* consists of synth settings (like cutoff freq., resonance, waveform etc.)
6. A *state* contains the modes (like Midi and sync) of the plug-in, the step number and configuration information.
7. A *bank* consists of a 16 programs, 128 patterns and current state. The bank can usually be saved and loaded by the host as an .fxb file.
8. The configuration file Config.ini contains information about how the plug-in should be initialized on start up.
9. The file MidiCC.ini contains information about the assigned MidiCC's and is saved automatically when the plug-in closes.

Architecture

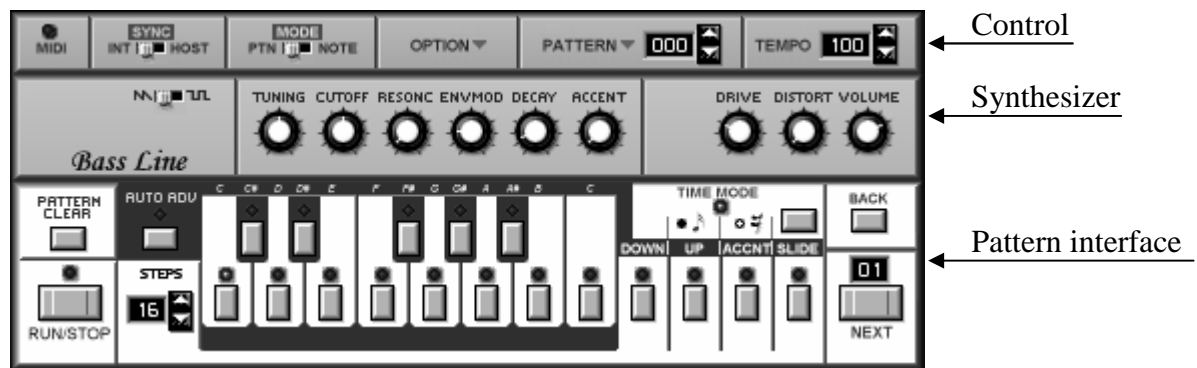
The architecture of the original Bass Line synthesizer is rather simple. It has one voltage controlled oscillator (VCO), one voltage controlled filter (VCF) and one voltage controlled amplifier (VCA). The VCF and VCA are controlled by an envelope generator (EG) with decay and modulation amount controls. All modules are controlled by a digital sequencer. ABL emulates each of these modules down to component level where even effects as hysteresis are taken into account.

Bass Line

Layout

The AudioRealism Bass Line user interface is divided into three sections:

1. Control
2. Synthesizer
3. Pattern programming interface



ABL is operated by using the mouse to change the different controls.

- Knobs – Click the knob and drag the mouse. Dragging the mouse up or down in linear mode turns the knob clockwise or counterclockwise. For more precise settings hold down the <Shift> key while dragging the mouse. It is possible to alter the knob mode (see Configuration section).
- Buttons – Single click buttons
- Switches – Click and drag right or left to slide into the desired position
- Menus – Click the down arrow to reveal the menu
- Value displays – Click the up or down arrows to change value. It is also possible to click the value field and drag the mouse to rapidly change the value.

Control Section

The control section is used to specify how ABL should operate.



Midi Led

The Midi Led will light when there is Midi activity sent to the plug-in. The plug-in receives Midi information on all 16 channels.

Sync

The sync mode switch has two settings: *Internal* and *Host*. To change the settings click on the switch and slide the mouse in the direction you wish to set the switch.

- In Internal sync mode it is possible to set the tempo between 50 and 250 BPM
- In Host sync mode the tempo control has no effect as the tempo is read from the host, and cannot be altered from ABL.

Mode

The Midi Mode switch operates as the Sync switch. The two settings are:

- **PTN** - Patterns are selected from Midi notes. Each Midi note corresponds to one pattern, with the lowest possible note being pattern 0 (zero) and the highest note pattern 127. A *note on* message will start a pattern and a *note off* message will stop the pattern.
- **NOTE** - Notes are played directly from the Midi notes and the internal sequencer is disabled. This allows ABL to be played as normal synthesizer. If two notes overlap then a slide will occur between those notes. If a note with velocity over 100 (default) is played then an accent will be activated.

Option

The option menu is activated by clicking on the text or near the arrow. This menu allows you to alter the way ABL functions.

Midi CC

Activate Midi learn	Selecting this item will activate Midi learn and change the item to <i>Deactivate Midi learn</i> .
---------------------	--

Emulation

Switch to 24dB filter	The filter can be switched to 24dB/octave attenuation. The number denotes the slope of the filter cutoff in decibels per octave. The 18dB/octave filter (modeled after the original Bass Line) has a brighter sound than the 24dB filter.
Switch to non-exact tuning	Switching to non-exact tuning makes the oscillator out

Bass Line

	of tune, especially in the upper range of notes. This simulates the way old analog synthesizers go out of tune after warm up.
Activate highpass filter	The highpass filter is fixed to cut bass frequencies. This is useful in situations where ABL is competing for bass frequency room with other bass lines.

Configuration

Load MidiCC map	Loads the Midi controller map from MidiCC.ini.
Save MidiCC map	Saves the Midi controller map to MidiCC.ini.
Reload Configuration	Reloads Config.ini and activates the settings.

Registration/Info

About Bass Line	Presents registration and information about the plug-in.
-----------------	--

Pattern

The pattern menu is used to alter the current pattern using following functions:

Copy/Paste

Copy	Copies the pattern to the copy buffer.
Paste	Pastes the copy buffer over the current pattern.

Transpose

Transpose +12	Transposes the pattern up 12 semitones (one octave).
Transpose -12	Transposes the pattern down 12 semitones (one octave).
Transpose +1	Transposes the pattern up 1 semitone.
Transpose -1	Transposes the pattern down 1 semitone.

Note: An attempt to transpose out of range will set the notes to the highest/lowest pitch that is possible.

Shift functions

Shift Left	Shifts pattern one step to the left.
Shift Right	Shifts pattern one step to the right.

The shift functions only affect the steps within the pattern length and work circularly.

Transform

All notes off	Sets all notes to rests.
All accents off	Turns off all accents.
All slides off	Turns off all slides.
Randomize	Randomizes everything (pitch, transpose, accent, slide and time mode).

Import/Export

Import pattern	Import (Freebee) pattern from text format.
----------------	--

Bass Line

Export pattern	Export pattern to text format.
Import Rebirth 338 patterns	Imports Rebirth patterns into ABL patterns 0-63

Pattern selector

Click the arrows to change the pattern in increments, or click on the digits and drag the mouse up or down to scroll patterns.

Tempo

Click the arrows to change the tempo in increments, or click on the digits and drag mouse the up or down to scroll. Note: Tempo can only be changed in Internal sync mode (see Sync).

Synthesizer Section

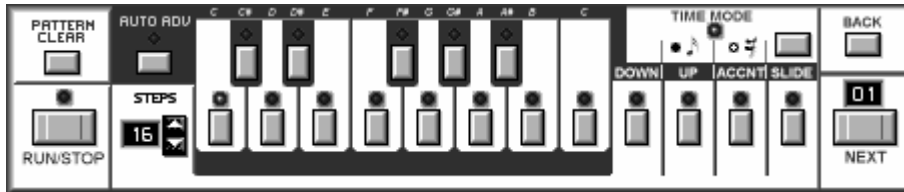


Synthesizer settings are modified by clicking on the switch(es) or knobs and dragging the mouse. The controls from left to right are:

- **Waveform** - Click the waveform control to toggle between sawtooth and squarewave. ABL's waveforms are modeled from analog synthesizers and have a liquid quality to them.
- **Tuning** - The tuning control has a two octave range. To make fine tuning adjustments, hold down the <Shift> key while adjusting the tuning knob. ABL's default tuning is set to A-220Hz.
- **Cutoff** - The cutoff control sets the basic cutoff frequency of the VCF. Since the ABL filter is a low pass filter, all frequencies above the cutoff frequency will be attenuated. Attenuation can be 18dB/octave or 24dB/octave.
- **Resonance** - Resonance emphasizes certain frequencies around the cutoff point. This makes the sound brighter and also affects the envelope of the accent.
- **Envmod** - Envelope modulation determines how much movement there should be in the cutoff frequency. Envelope modulation is bipolar in ABL, thus it modulates the cutoff positively and negatively with the basic cutoff as center point.
- **Decay** - Decay control sets the speed of the envelope. Turning the knob clockwise will increase decay time, while turning counterclockwise will shorten the decay time.
- **Accent** - The accent control sets the amount of accent for those steps which have accent programmed on them. Turning the knob clockwise increases the effect of accents.
- **Drive** - The knob controls the drive of the signal being fed into the distortion circuit. This only has any effect if the distortion knob is not fully counter clockwise.
- **Distortion** - The distortion circuit is activated when the knob is not positioned fully counterclockwise (in its minimum position). Increasing the distortion will make the sound harsher. The most 303 like setting is approximately 20% distortion.
- **Volume** - The volume control simply affects volume. When the volume is set to 75% or more the sound will begin to clip. This is also the nature of the original Bass Line.

Pattern programming Section

The Pattern programming section consists of a number of buttons. Some of the buttons have diodes linked to them. The diodes show the current state for the step.



Pattern Clear		Clears the pattern. All pitches are set to middle C and the notes are either set to on (default) or off (see section Configuration settings).
Run/Stop		The Run/Stop starts and stops the internal sequencer. This can be used to audition the current pattern. When the sequencer is running the diode will blink.
Steps		This control is used to set the number of steps in the pattern. Click the arrows to increment or decrement the number of steps, or click on the digits and drag the mouse up or down to scroll.
Auto Advance		Click to toggle between auto advance on or off. The diode will present the current mode. When auto advance is on, entering a pitch from the pitch keyboard will automatically advance to the next step. Turning off the auto advance will return step indicator to the first step.
Time Mode		When the diode is lit the note is on, else the note is a rest. Clicking the button will toggle the time mode.
Next / Step indicator		The digits indicate which step being edited. Clicking the Next button advances to the next step. If the position is already on or beyond the last step the indicator will return to the first step.
Back		The back button makes the step indicator go to the preceding step. If the position is on first step the indicator will return to the last step in the pattern.

Pitch Keyboard		The pitch keyboard is used to enter pitches into the pattern. The diode which is lit represents the pitch on the current step.
Effect Buttons		The Up/Down buttons transpose the pitch in the respective direction. Accent activates an accent on the current step. Slide activates a slide on the step.

Programming patterns

Time Mode

ABL has two time modes: either the step is a 16th (♩) or a rest (♩, mute for a 16th). In practice this can be viewed as note on (♩) /note off (♩) for each step. Only *on* notes affect pitch, accent and transpose. However even off notes can sound in ABL (see Slides).

Slides

A slide programmed on a step will make the note sound longer, and glide to the pitch of next step (if the next step is not rested). If the next note is rested then the note will be extended (see Ties).

Accents

An accent programmed on a step alters the sound in various ways. It shortens the decay time for the step and raises the cutoff to a degree controlled by the accent control in the synth section. Interesting things happens when subsequent accents are programmed into the pattern. Since the (simulated) capacitors haven't discharged completely the accents accumulate in a way driving the cutoff higher and higher.

Ties

There is no way to explicitly specify ties between two notes. To simulate a tie, create a step with a *note on* and slide programmed on the first step, and a *note off* on the second step. Since the note is off on the second step, accent, transpose and pitch will be disregarded for that step. To make the note even longer extend it further by activating the slide on the second step. Example: Programming four notes with time modes set to ■■■■ and slides on steps 1, 2 and 3 will produce a whole note.

Midi CC

ABL can be controlled by any Midi CC controller. The default controller map for ABL is:

Control	Midi CC
Cutoff	74
Resonance	76
Envmod	77
Decay	78
Accent	79
Volume	7
Tuning	71
Waveform	70
Distortion	91
Drive	92

When ABL initializes, the controller map is read from MidiCC.ini which resides in the same path that BassLine.dll is installed into. MidiCC.ini can be edited with a text editor like Notepad if you wish to change the controller map manually. Setting a value of -1 means the control is not assigned.

Midi Learn

ABL has a learn function which enables the use of any controller.

1. Activate Midi learn in the Option menu
2. Select a control on ABL's panel and adjust it a bit
3. Turn the Midi controller you want to assign to that control. You should see the ABL control on screen moving according to your changes
4. Continue with all controls that you wish to assign
5. Deactivate Midi learn in the Option Menu
6. (Optional) Save the controller map by selecting Save MidiCC in the Option menu.

When ABL is closed (for instance when removing the plug-in from your mix, or closing the host sequencer) the controller map is automatically saved. Next time you load ABL it will recall the settings you have made.

If you wish to restore the default controller map, remove the MidiCC.ini file from the directory where BassLine.dll resides. **Warning:** Make sure you remove only MidiCC.ini and no other files.

Automation of Controls

Each of the synthesizer controls can be automated by the host. Consult the hosts' documentation on how to do this.

Configuration

ABL can be set up to your liking through the Control.ini file which resides in the same directory as BassLine.dll. It's a good idea to backup Control.ini before making any changes to it. The valid Config.ini tags are:

Tag	Valid range/values	Description
FilterSlope	18 or 24	Sets the filter slope in dB
SyncMode	Internal or Host	Sets the sync mode
MidiMode	Pattern or Note	Sets the Midi mode
Tempo	5-250	Tempo of internal sequencer in BPM
ClearNotes	On or Off	Determines whether notes are On or Off after a Pattern Clear
GUIKnobMode	0 – Circular 1 – Relative 2 – Linear	Preferred knob mode on startup. Note: this may be overridden by the host.
AccentVelocity	0-127	Midi velocity to trigger accents when using ABL in Note mode
Highpass	On or Off	Sets the highpass filter
Firststep	0 or 1	Display the first step as 0 (Freebee) or 1 (Rebirth style) in the step indicator
Tuning	Exact or Nonexact	Sets the tuning
ParameterSmoothing	On or Off	The default parameter smoothing can be turned off, introducing potential zippering sounds
EmulationMode	0 - 303 1 - Freebee	Default emulation mode is 303.

If Config.ini has been altered or you wish to reset the settings of ABL, use Reload Configuration in the Option menu.

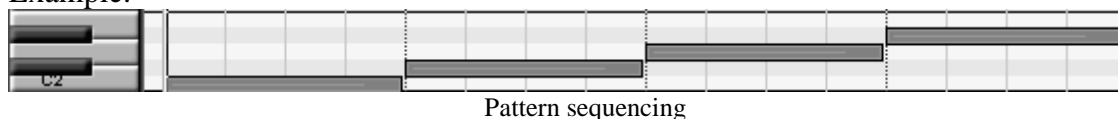
Using Pattern Mode

Each Midi note (0-127) corresponds to an ABL pattern. *Note on* messages start playback of the pattern, and *note off* message stops playback. Velocity information is not used in this mode.

Pattern Sequencing

Pattern sequencing is done by using the draw/pen tool (or similar) in the host sequencer. Simply draw in the keyboard grid how long each pattern should play.

Example:

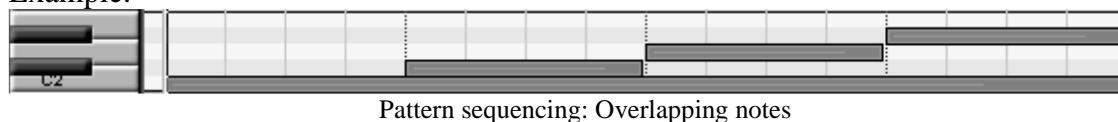


Assume all patterns are 16 steps long. Since the notes are not overlapping, the sequencer will retrigger and each pattern will play back steps 1-4.

Pattern Sequencing without retrigger

It is possible to cut off a pattern in the middle by using overlapping notes.

Example:



In this situation the C2 note is never released. Since C#, D and D# overlap this note the sequencer will not retrigger and this will play back pattern C steps 1-4, C# steps 5-8, D steps 9-12 and D# steps 13-16. This opens up possibilities to create new interesting patterns from those in ABL's memory.

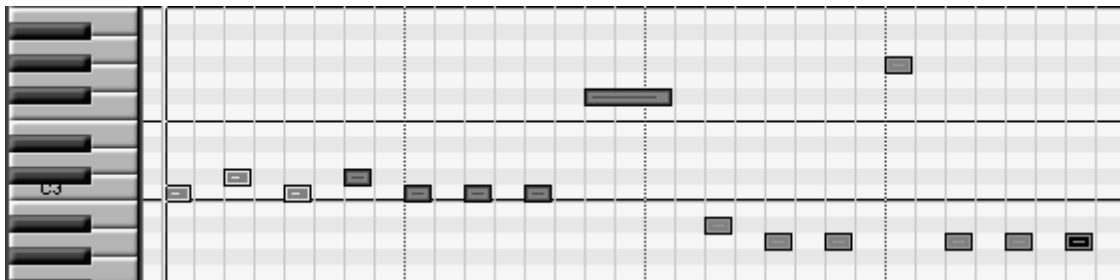
There are two things to keep in mind when using overlapping patterns:

- A retrigger of the sequencer occurs when a note on event is received, and no pattern is currently playing. If more than two patterns are overlapped then ABL will return to the *highest pattern* when a note off message is received. A good rule is to never use more than two overlapping patterns to avoid confusion.
- When switching from a pattern with greater length to a shorter one (example going from 16 step pattern to a 4 step) the internal sequencer will start on the remaining step. Example: if ABL is on step 13 and switches to a 4 step pattern, the first step played in the new pattern will be 2, since the remainder of $13/4$ is 1 (the second step counting from zero).

Using Note Mode

When ABL is Note mode it functions as a normal Midi device and the internal sequencer is disabled. Overlapping two notes will activate a slide (glide) between the notes, and notes with velocity over a certain threshold will produce an accented note. The default threshold is velocity 100, but can be changed (see Configuration, AccentVelocity).

Producing bass lines that sound accurate require use of many staccato notes. This can be done by using 32nd grid resolution in the host sequencer and making sure that each note is one half 16th. This approximates the standard gate time of ABL which is about 55% of the total note, and is needed for accurate 303 emulation. If you prefer to play legato that is of course perfectly fine as well.



Example of programming in Note mode

Importing Rebirth RB-338 Patterns

Rebirth RB-338 Patterns are imported to ABL according to following scheme:

Rebirth Synth/Bank	ABL pattern
Synth 1 – Bank A	0-7
Synth 1 – Bank B	8-15
Synth 1 – Bank C	16-23
Synth 1 – Bank D	24-31
Synth 2 – Bank A	32-39
Synth 2 – Bank B	40-47
Synth 2 – Bank C	48-55
Synth 2 – Bank D	56-63

Patterns 64-127 are not affected by this operation. When importing the settings of the ABL controls are set to match those of Rebirth 338 Synth 1. Tempo, volume and distortion controls are not affected.

Freebee/Text pattern format

The import/export text format can be used to share patterns online via forums or email. The structure is as following: Four fields per line. Pitch, Gate, Slide and Accent which are delimited by white space.

- The pitch is represented in a tracker-fashion, example c-3 or g#4 and must be three characters wide.
- The gate is 1(one) for note on or 0(zero) for note off.
- The slide is 1 for slide on or 0 for no slide.
- The accent is 1 for accent or 0 for no accent.

The number of steps in the pattern is determined by the number of lines, so make sure to remove any preceding or trailing empty lines.

Note: There is no error checking on import so improper patterns might result in garbage when imported into ABL.

Programs/Banks

Patterns and synth settings are saved with the bank. When you reopen your project ABL will continue in the exact state that you saved the project in.

Copying Patterns between Instances

Each instance of ABL has its own memory. In order to copy patterns from one instance to another, you need to either:

1. Export the pattern using the Export function in the Option menu, then import the pattern into the other instance.

2. Save the .fxb bank from the host sequencer, then Load the .fxb into the other instance.

Thanks

I (Mike Janney) would like to take this opportunity to thank the following people for their support and suggestions (no order):

Ronny Pries
Alex Hapted
Matthijs Jansen
Frank Chotai
Fredrik Andersson
Crister Ekstrand
Izmar Verhage
Marc te Vruchte
Thomas Sandberg

and all of you who have supported Freebee, thus making this possible.

Appendix: Specifications

Plug-In

- PC: Standard VST instrument plug-in
- Sample rates supported: 44.1kHz, 48kHz

Architecture:

- Monophonic
- 2 VCO's
- 1 VCF
- 1 VCA
- 64 bit alias free signal processing

Memory

- 16 Programs

Internal Sequencer:

- Pattern memory: 128 Patterns
- 1 to 64 Steps / Pattern
- Effects per Step: Accent, Slide and transpose (up/down)
- Time modes: 16th and rest.
- Tempo range: 25-250 BPM or 1-500 BPM in Host sync mode

Synthesizer:

- Tone generator: 4 Octaves range
- Two waveforms (Sawtooth and Square wave)
- Filter type: Low pass resonant
- Filter range: 0-22kHz resonance frequency
- Filter slope: 18 or 24dB/octave
- Envelope control: Modulation, Decay and Accent
- Decay time approx 0.2 - 3.5 sec

Rebirth RB-338 is a registered trademark of Propellerheads Software, Sweden
VST PlugIn Interface Technology by Steinberg Soft- und Hardware GmbH.